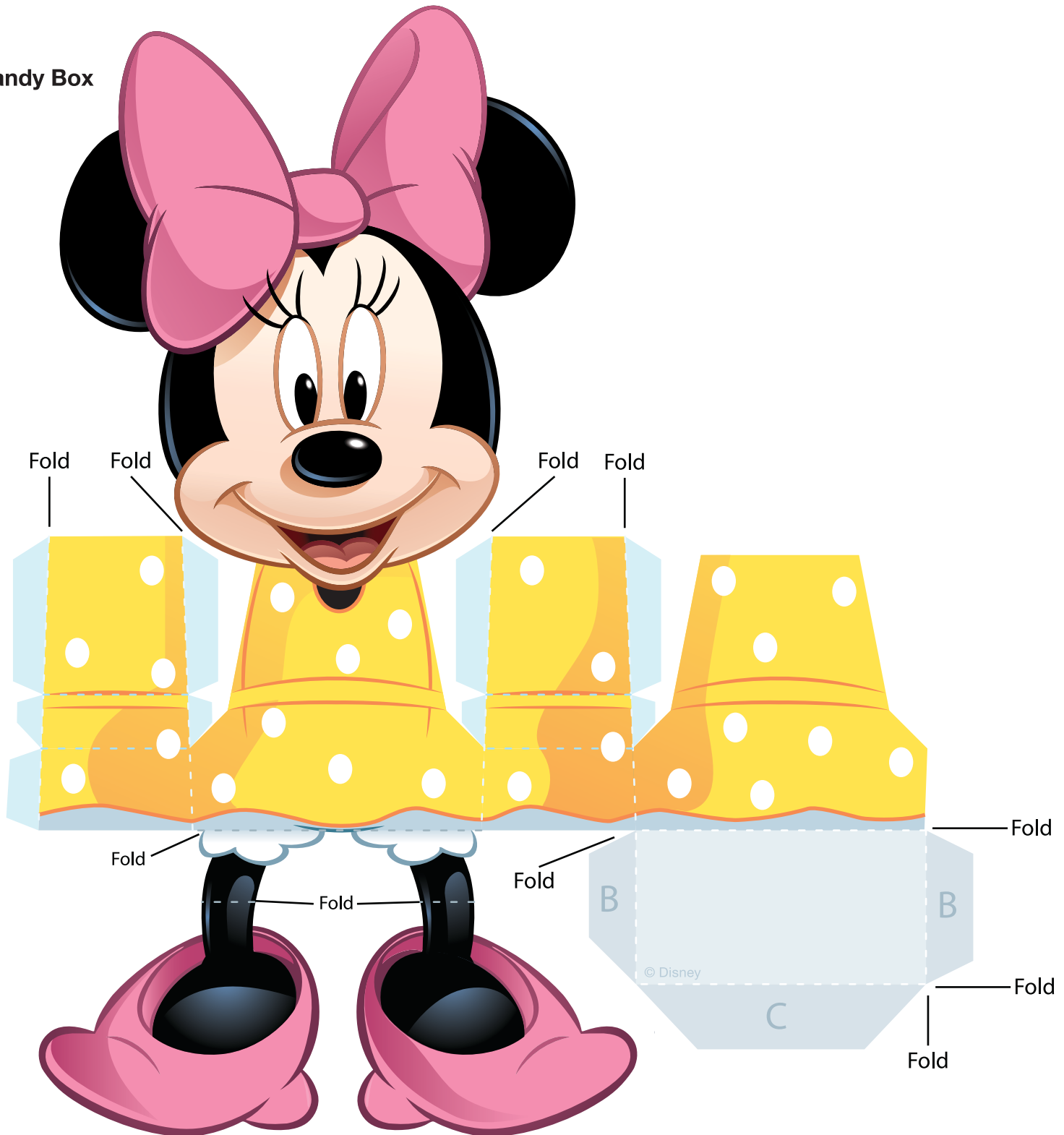
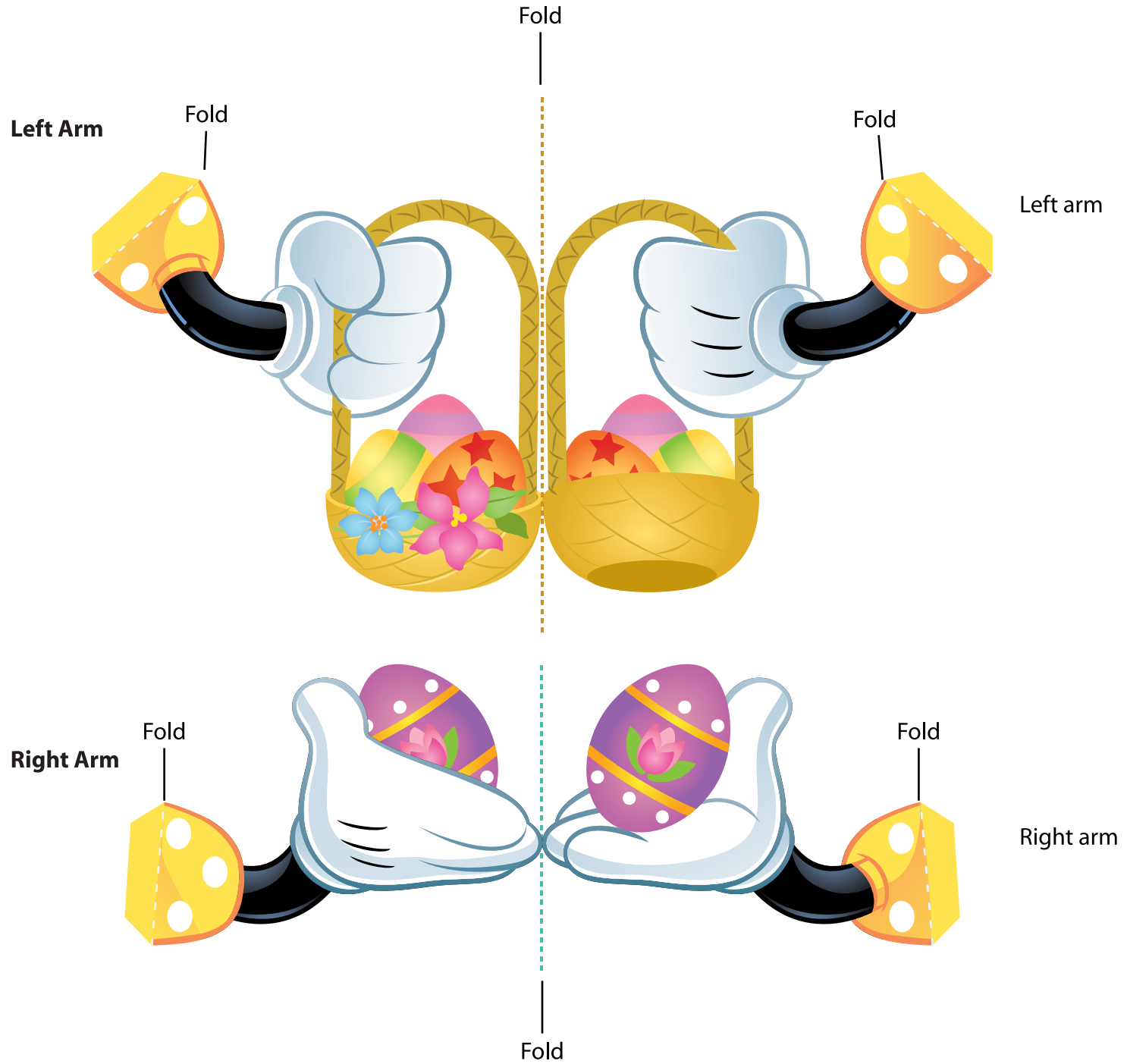


Minnie's Easter Candy Box



Minnie's Easter Candy Box



Minnie's Easter Candy Box: Instructions

- 1) Print the template on regular paper or cardstock and cut out all the pieces. Make all folds along the dashed lines.
- 2) Using either glue or double-sided tape, close Minnie's body by securing the tabs around her torso to their corresponding pieces.
- 3) Close the bottom of the candy box by securing the B tabs, followed by the C tab.
- 4) Fold each of Minnie's arms in half along the dashed line so the design is two-sided. Without sticking the tabs together, secure the two sides.
- 5) Butterfly the tabs on Minnie's arms, and secure them to the sides of her body. Her right arm holds the egg, while her left holds the basket.
- 6) Finally, fold the top dashed lines on Minnie's legs toward you, and fold the lower dashed lines away from you – this will help her sit in place.